

Leroy Somer P280M-2

Specifications

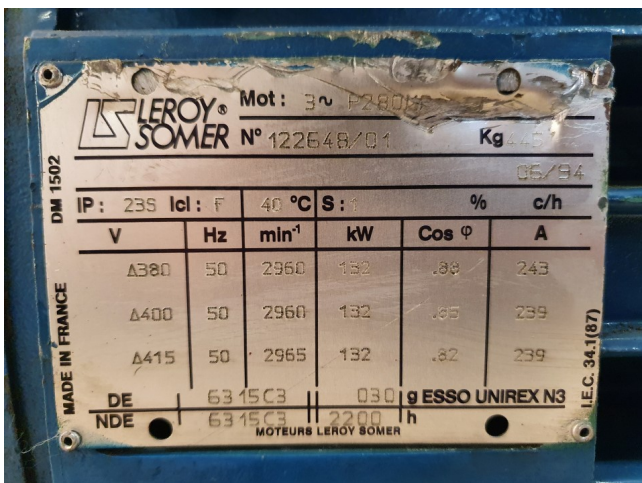
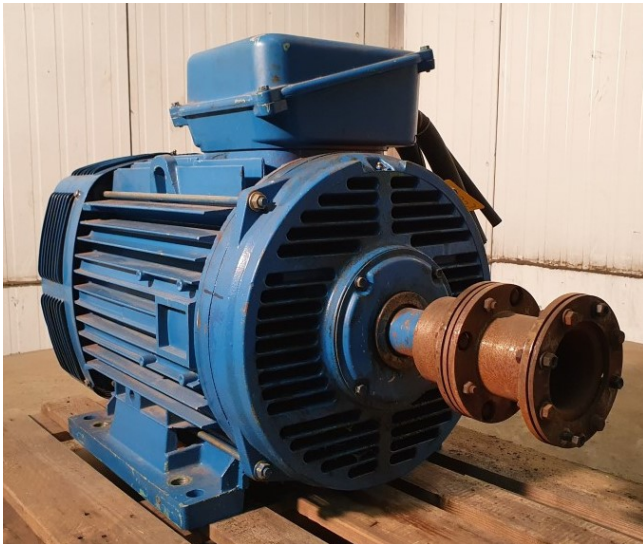
Marque	Leroy Somer
Type	P280M-2
kW	132
RPM	2965
Size & Weight	1200x800x850 mm (LxWxH) 445kg
50 Hz / 60 Hz	50 Hz
Stock	1



Description

Used Leroy Somer P280M-2

Used electromotor build by Leroy Somer type P280M-2 with 132kW and 2965RPM at 50Hz.





Your partner for used commercial and industrial refrigeration equipment
